

## 20 Ticket Open-Air Suite (4-day package)

Reserve an open-air private suite for your exclusive use from one of the locations outlined on the following page.

Each suite comes equipped with a standard décor package . The cost associated with each suite package is inclusive of all catering fees.

---

### PACKAGE AMENITIES:

- 20 tickets per day
  - Tuesday (June 21) & Wednesday (June 22) tickets gain access to the golf course and into an upgraded ticket area where food and beverage will be available for purchase.
  - Thursday through Sunday (June 23 - 26) tickets gain access to your reserved suite, the golf course and an upgraded ticket area
- 8 gallery tickets per day (Tuesday-Sunday) with access to the golf course
- 6 VIP parking passes per day (Tuesday - Sunday)
- Standard decor package including:
  - Drink rails with chairs and stools
  - High top tables and stools in the back common area
  - Open bar positioned in the back common area
  - TV showing the live broadcast of the U.S. Senior Open
- Opportunity to purchase co-branded U.S. Senior Open merchandise with your company name or logo and the U.S. Senior Open logo
- In-seat ordering of food and beverage Thursday through Sunday from 8am-6pm. Menu will include continental breakfast and lunch items as well as late afternoon snacks.

---

### INVESTMENT:

Inclusive of all catering fees

**\$50,000** + applicable taxes

- \$40,000 - Rental & Admission Fee

- \$10,000 - Food & Beverage Fee

### PAYMENT SCHEDULE TO USGA:

**\$13,333**

With letter of intent

**\$13,333** + a portion of applicable taxes

Prior to August 1, 2021

**\$13,334** + balance of applicable taxes

Prior to February 1, 2022

### PAYMENT SCHEDULE TO CATERER:

**\$10,000** + applicable taxes

Prior to February 1, 2022

## 20 Ticket Open-Air Suite Locations

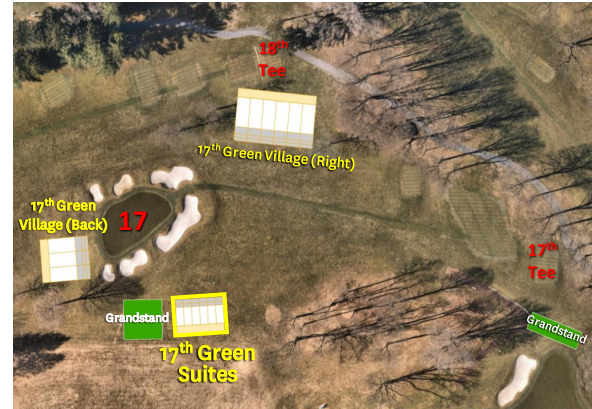
Choose the location of your suite from one of the following premier locations on the championship course:

### 18<sup>th</sup> Green Suites



Located on the golfer's left of the 18<sup>th</sup> green with an unobstructed view of the 18<sup>th</sup> green and the approach shot into the 18<sup>th</sup> green.

### 17<sup>th</sup> Green Suites



Located to the golfer's left of the 17<sup>th</sup> green with an unobstructed view of the 17<sup>th</sup> hole (a par 3) from tee to green.

### 15<sup>th</sup> Green Suites



Located behind the 15<sup>th</sup> green with an unobstructed views of the 15<sup>th</sup> green, 16<sup>th</sup> tee and 10<sup>th</sup> tee.

### 9<sup>th</sup> Green Suites



Located behind the 9<sup>th</sup> green with an unobstructed view of the 9<sup>th</sup> hole (a par 3) from tee to green.